



New Zealand  
Tertiary College

TERTIARY COLLEGES GROUP

# EARLY CHILDHOOD EDUCATION PROSPECTUS





# SPECIALISTS IN EARLY CHILDHOOD TEACHER EDUCATION

New Zealand Tertiary College (NZTC) is a private college specialising in early childhood teacher education.

The college was founded in 1982. Since then we have gained significant sector recognition for our graduates and New Zealand Qualifications Authority (NZQA) approval for our qualifications.

New Zealand Tertiary College continues to be a leader through our commitment to high quality early childhood professional and teacher education qualifications that reflect the ever evolving needs of the sector.



## WELCOME TO NEW ZEALAND TERTIARY COLLEGE

A career in early childhood education is like no other – it contributes to the future through the care and education of our next generation.

Our mission is to empower you with the knowledge, beliefs, skills and attitude that will enable you to achieve your full potential as an effective early childhood educator. In choosing New Zealand Tertiary College as your place of study, you choose a college with a long history and tradition of commitment to outstanding early childhood teacher education.

We support our students to care, educate and serve meaningfully and effectively guided by our values of *Vision, Heart, Competence* and *Spirit*, that are at the core of our college and are a fundamental part of our identity.

Whether you are new to tertiary study or a graduate looking to upskill with an internationally recognised, professional early childhood qualification, we offer a program to support your learning style and lifestyle.

Welcome to New Zealand Tertiary College – we look forward to guiding you in your professional journey.

*Selena Fox*

**Selena Fox**  
Chief Executive







## WELCOME TO NZTC

3

Why study with us?	6
Quality assurance	7
Recognition	7
Our mission and values	8
Career opportunities	10
Discover New Zealand	12
Campus life & support	14
Study options	16
Our qualification pathways	20
Frequently asked questions	21

## POSTGRADUATE QUALIFICATIONS

22

Master of Education (Early Childhood Education)	24
Master of Early Childhood Education	26
Postgraduate Diploma in Education (Early Childhood Education)	28
Postgraduate Certificate in Education (Leadership and Management)	30

## UNDERGRADUATE QUALIFICATIONS

32

Graduate Diploma in Teaching (Early Childhood Education)	34
Bachelor of Teaching (Early Childhood Education)	36
Bachelor of Teaching (Early Childhood Education) Upgrade	38
Bachelor of Education (Early Childhood Education)	40
New Zealand Diploma in Early Childhood Education and Care (Level 6)	42
New Zealand Diploma in Early Childhood Education and Care (Level 5)	44

## ADDITIONAL INFORMATION

46

Frequently asked questions	46
How to become an NZTC student	48
Find out more	49



# WHY STUDY WITH US?

94%  
of our students  
recommend studying  
with us\*



## 1 A LEADER IN EARLY CHILDHOOD TEACHER EDUCATION

NZTC has been specialising in early childhood teacher education for 37 years, offering high quality, professional qualifications that reflect the evolving needs of the early childhood education sector.

## 2 NEW ZEALAND QUALIFICATIONS AUTHORITY (NZQA) APPROVED

Our programs of study blend theoretical and real-world learning to ensure you get the very best learning experience to benefit the children and their families in your care. NZTC is accredited by NZQA to deliver NZQA approved qualifications that are internationally recognised.

## 3 FLEXIBLE MODES OF LEARNING

NZTC offers a choice of study options designed to suit different learning styles and lifestyles, ensuring you receive a quality and enjoyable learning experience.

## 4 MANAGE YOUR COMMITMENTS

Our online learning environment *NZTC Online* allows you to balance your work and family commitments so you can study your way, in your time, from anywhere you have internet access.

## 5 GAIN NEW ZEALAND TEACHER REGISTRATION

Graduates of our Bachelor of Teaching (Early Childhood Education) and Graduate Diploma in Teaching (Early Childhood Education) qualifications are eligible to apply for New Zealand teacher registration with the Teaching Council of Aotearoa New Zealand (Teaching Council). Teacher registration improves your job prospects and your ability to apply for residency if you are not from New Zealand.

\*NZTC 2018 Student Survey

## QUALITY ASSURANCE

External evaluations consistently speak to the outstanding quality of NZTC's programs. The New Zealand government body that reviews the quality of educational programs, the New Zealand Qualifications Authority (NZQA), continues to score NZTC with a Category One result of "Highly Confident" in educational performance and "Highly Confident" in self-assessment, the highest possible ranking. The college's programs are also listed on the New Zealand Qualifications Framework, the definitive source for quality assured qualifications in New Zealand.

*“As a graduate living in Melbourne, having my qualification on Australia's list of approved qualifications is a great bonus... it had a positive impact on my salary and employability.”*

Harpreet Singh  
Bachelor of Teaching  
(Early Childhood Education)



## RECOGNITION

### NATIONAL

All NZTC qualifications are approved by the New Zealand Qualifications Authority (NZQA). NZQA has put in place systems to guarantee the consistency of training and assessment, ensuring New Zealand qualifications are valued as credible and robust nationally and internationally.

### INTERNATIONAL

Our Bachelor of Teaching (Early Childhood Education) and Graduate Diploma in Teaching (Early Childhood Education) qualifications are approved by the Australian Children's Education and Care Quality Authority (ACECQA) – the body which oversees the national quality framework for the

Australian early childhood sector, meaning NZTC graduates who wish to apply for early childhood teacher status in Australia can do so without having to apply for an assessment of their qualifications.

The college's programs are also accredited by a wide-range of international organisations and government bodies, including: the Chinese Ministry of Education, The University Grants Commission – Sri Lanka, Malaysian Qualifications Agency & Malaysia Ministry of Higher Education, and German higher education database Anabin.



# OUR MISSION AND VALUES

Passionate about our commitment to outstanding early childhood teacher education, we are guided by our mission statement which provides a clear direction for our present and future activities.

We keep our values close to our heart. They underpin our mission statement and act as everyday reminders of our priorities in every thought, decision, responsibility and task we undertake at and through the college.



## VISION - TE MATA

Guided by deep care and respect for the vulnerable and recognising their potential unique needs we are encouraged to look to the future and are dedicated to the best outcomes for those whose lives we touch.



## HEART - NGĀKAU

With *Heart* and kindness we celebrate and embrace people and their diverse cultures, talents and abilities. We acknowledge that it is through our students love and affection that families and the wider community benefit.



## COMPETENCE - POUTAMA

Dedicated to increasing *Competence* and confidence, we enable students to make a positive difference through care, education, professional service and a commitment to excellence.



## SPIRIT - WAIRUA

Encompasses not only a *Spirit* to succeed and act with courage and initiative, but is a powerful acknowledgement of God's spirit; the life-force within every child and adult. We honour this spiritual dimension, His guidance and enabling in our lives, our endeavours and our outreach.

## NZTC Mission Statement

“New Zealand Tertiary College values people and is committed to empowering students to care, educate and serve meaningfully and effectively by providing comprehensive and professional programs.”





# A CAREER FOR LIFE

More than ever before early childhood education is considered a profession, with specialist early childhood qualifications, research options, conferences and other professional development opportunities.

NZTC graduates work in a range of early childhood related roles including:

- ▶ Early Childhood Teacher
- ▶ Kindergarten Teacher
- ▶ Speech Language Therapist
- ▶ Early Intervention Teacher
- ▶ Centre Manager
- ▶ Nanny
- ▶ Social Worker
- ▶ Lecturer
- ▶ Counsellor
- ▶ ECE Curriculum Advisor

A career in early childhood education makes a real difference by helping to shape the future of our next generation. Contributing to the lives of young children, families, and communities is rewarding and stimulating, and gives you the opportunity to work in diverse and multicultural environments.

## STUDENT PROFILE

### Simon Baker

Bachelor of Teaching  
(Early Childhood Education)



*"I love seeing the children grow and building strong relationships with the whānau and community."*

During my third year of studying to be a primary school teacher I started to do relief ECE work. Working with young children opened me up to a whole new area of education.

I really enjoyed working with toddlers and young children so I decided to cross over into studying early childhood teaching with NZTC.

I love seeing the children grow and building strong relationships with the whānau and community.

I think it's important to have male teachers in early childhood, especially for children who might not have a father figure or fatherly role model to look up to in their younger years.







# DISCOVER NEW ZEALAND

New Zealand is consistently ranked as one of the top countries in the world for quality of living by internationally respected surveys.

Famous for its abundant natural beauty and spectacular landscapes, New Zealand offers everything from sandy beaches and forests to volcanoes, ski fields and glaciers.

There is lots to see and do in New Zealand with popular pursuits including outdoor adventures ranging from skiing in Queenstown, to hiking and camping in our beautiful national and regional parks.

For those who prefer the indoors, major cities offer a variety of cafes, restaurants and shops.

## OUR KIWI CULTURE

New Zealand is home to people from all around the world, resulting in a diverse multicultural population of 4.9 million. Kiwi culture has been largely influenced by both European (Pākehā) principles and indigenous Māori culture.

Today, the rich Māori culture and language are an integral part of New Zealand life.



## STUDENT PROFILE

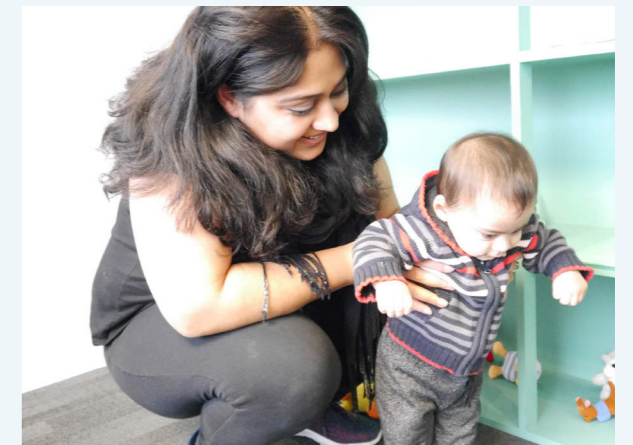
### Pallavi Rawat

Postgraduate Diploma in Education  
(Early Childhood Education)

*“NZTC’s flexible learning modes gave me the freedom to explore and truly understand New Zealand’s early childhood education system.”*

Online study enabled me to spend a lot of time at early childhood centres getting to know the New Zealand curriculum and gaining hands-on experience.

I became more confident as I came to understand how the centre worked and exactly what was required of staff, so when I graduated I felt fully prepared entering the workforce.



I initially planned to return to India after study but decided to stay after falling in love with my career and the peacefulness of life in New Zealand.

I now work in Auckland as a Centre Administrator, a job that enables me to utilise my early childhood education skills and knowledge while also maintaining a great work-life balance.



# CAMPUS LIFE & SUPPORT

NZTC has a campus in both the North and South Island of New Zealand. Both campuses are centrally located within their cities and easily accessible by public transport.

Our North Island Campus is located in Auckland, the largest city in New Zealand with a population of more than 1.4 million people, and our South Island Campus is in Christchurch with a population of 368,000.



Our students are at the heart of everything we do. We pride ourselves on our range of support services available to help you succeed in your studies and our open door policy means that you can call, email or pop in to see us whenever you need.

## A QUALITY LEARNING ENVIRONMENT

You will feel at home studying with NZTC. We have great resources available at both our campuses and online, and we have passionate teaching staff to ensure you get the most from your study.

## OUR PEOPLE

Over 100 staff deliver our high quality early childhood education qualifications, bringing strong experience in the early childhood sector as well as across adult education, administration, research, leadership, management, and information technology sectors.



## FACILITIES

Our Auckland and Christchurch Campuses feature purpose-designed classrooms, a specialist early childhood library, student common rooms and kitchen facilities for students to enjoy.

## LIBRARY

NZTC has one of the largest specialist early childhood libraries in the country with over 20,000 titles. Students can browse the shelves, search our online catalogue, or utilise any of the multimedia items available, including DVDs, CDs, audio cassettes and videotapes. There's also computer and internet access, photocopy facilities, and space for individual and small group learning.

Our friendly librarians are on stand-by to help you get the most out of our extensive library and online databases.



## ACADEMIC SKILLS SUPPORT TEAM (ASK)

ASK is a team of lecturers dedicated to supporting our students with the development of their academic skills.

- ▶ Academic writing
- ▶ Interpreting essay questions
- ▶ APA referencing
- ▶ Research database skills
- ▶ Punctuation and grammar
- ▶ Time management skills
- ▶ Making the most out of NZTC Online

## MĀORI AND PASIFIKA SUPPORT

To ensure we are hearing the voices and meeting the needs of our Māori and Pasifika students, a Māori and Pasifika Student Liaison is available alongside specific support tutorials.

## PASTORAL SUPPORT

Our Pastoral Support Team is here to help you deal with any personal issues that may affect your performance as a student. Pastoral Support regularly supports students through health and family issues, and can direct you to external support agencies should you require them.

## IT HELP

For any IT related challenges, help is at hand. Our team offer extended hours to resolve any technical issues you may have, giving clear guidance without the 'techy talk.'

## HELPING YOU SETTLE IN

If you are not from New Zealand, we appreciate that there will be things you want and need to know. We have a wealth of information available for international students on our website, covering key areas such as accommodation, medical and travel insurance and eligibility for health services. To find out more visit [www.nztertiarycollege.ac.nz](http://www.nztertiarycollege.ac.nz)

We also have a dedicated International Team who are more than happy to assist you with any queries.

They can be contacted on +64 9 520 4000 (Auckland) or +64 3 366 8000 (Christchurch) or email [international@nztertiarycollege.ac.nz](mailto:international@nztertiarycollege.ac.nz)

## INTERNATIONAL ORIENTATION

To help our international students familiarise themselves with the college and the New Zealand way of life, we offer a comprehensive orientation. During orientation, students are taken to key sites around the campus cities and given information about emergency services, safety advice, job opportunities, immigration issues and the early childhood sector in New Zealand, as well as online learning and the academic requirements of our qualifications.





STUDY  
OPTIONS TO  
SUIT YOU

"I chose to study with NZTC as they offered flexible learning options which were helpful to fit around my religious, family, social and work commitments."

- Anne Singh  
Bachelor of Teaching (Early Childhood Education)

We offer a range of modes of learning to suit your learning style and lifestyle – giving you an enjoyable and high-quality learning experience.

Whichever mode of learning you choose, you will need to:

- › Have daily access to a computer or mobile learning device with broadband internet access
- › Complete courses and programs within specified time frames and undertake self-directed study

### ONLINE

NZTC Online is a flexible mode of learning that enables you to obtain an NZQA recognised, high quality qualification without face-to-face attendance requirements.

All learning materials and academic resources are accessed online to allow you to balance your studies with work and family commitments. Courses are completed and assessed online, and you are engaged in a global learning community where you can interact with other students and lecturers.

*\*Depending on your location NZTC may encourage field experience to complement your online qualification.*

### COLLEGE BASED

If you choose the College Based mode of learning, you attend 20 hours a week of lectures at an NZQA approved location. The College Based mode of learning includes access to NZTC Online which houses course materials, library, research and support materials, and assessment submission and return.

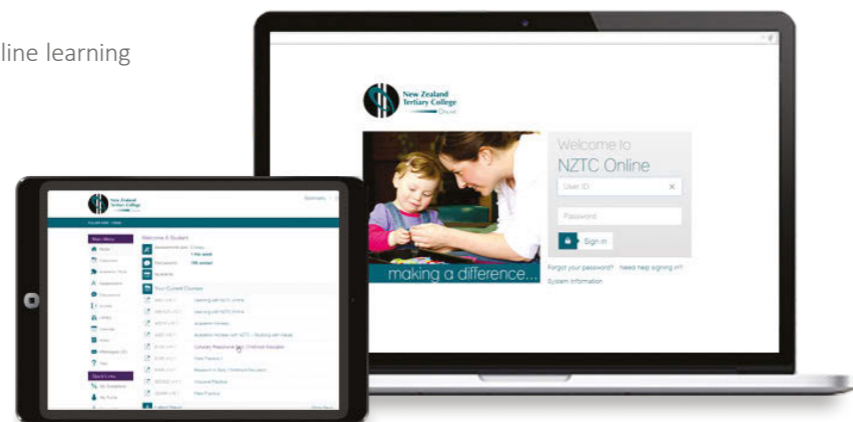
The College Based mode of learning is only available during the first year of study. After the first year you transfer into the Blended Learning, or the Online mode of learning.

*\* College Based classes are subject to minimum numbers.*

### BLENDED LEARNING

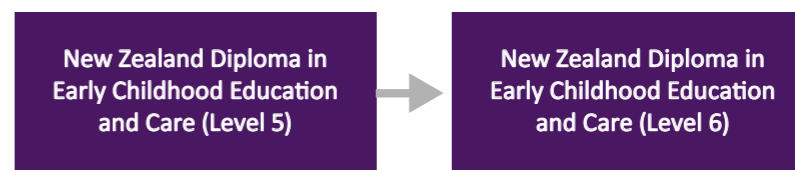
This mode of learning blends the flexibility of online learning through NZTC Online with face-to-face learning and practical experience including tutorials, Block Courses, supervised Field Practice and work experience.

*\*Blended Learning is only available in New Zealand.*



## UNDERGRADUATE OPTIONS TAILORED TO YOUR CAREER PATH

New Zealand Tertiary College's diploma qualifications are offered to students both with and without practical requirements, depending on whether New Zealand teacher registration is sought.



The diploma options above, allow students to pursue a qualification that suits their lifestyle and learning needs. Students can select from three modes of learning – College Based, Blended Learning and Online.

Field Practice courses can be selected within the Level 5 and Level 6 qualifications. These practical components enable students to begin fulfilling the initial New Zealand teacher registration eligibility requirements to pursue a career as a practising early childhood teacher in New Zealand.

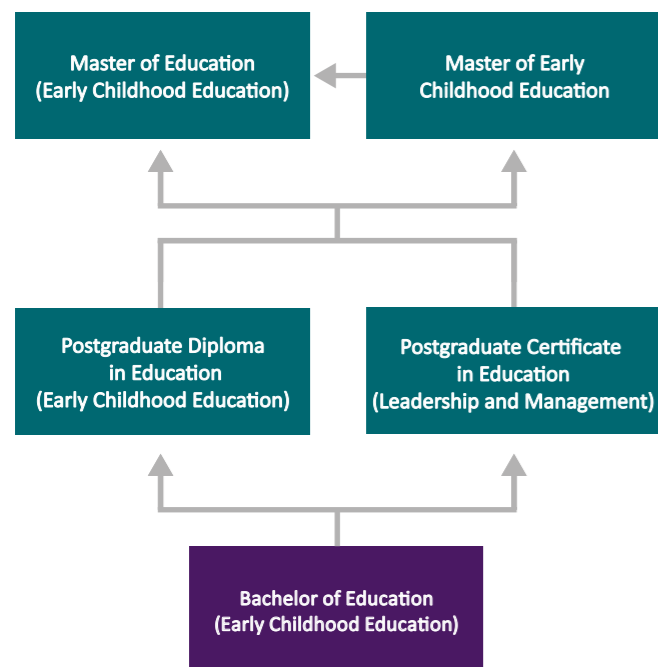
The online mode of learning has no practical requirements and is suited to those who wish to pursue a career in early childhood education without a teaching focus, or to those who wish to complete practical study at a later date.

Students can pathway into a Bachelor of Education (ECE) or a Bachelor of Teaching (ECE) after completing the Level 5 or Level 6 New Zealand Diploma in Early Childhood Education and Care. Graduates of the Bachelor of Teaching (ECE) are eligible to apply for New Zealand teacher registration.



# HELP SHAPE THE EARLY CHILDHOOD EDUCATION LANDSCAPE

The qualifications below are ideal for students who seek a career in early childhood education (researchers, scholars, lecturers or academics) without a teaching focus.



These qualifications are an ideal choice for students who need substantial flexibility whilst studying as there are no practical teaching requirements and all coursework is completed online, anywhere, anytime.

Our postgraduate qualifications (highlighted in teal) are designed to pathway into one another beginning with the six month Postgraduate Certificate in Education (Leadership and Management). However, a student can apply to gain entry directly into any one of our four postgraduate qualifications subject to entry criteria.

## STUDENT PROFILE

**Sacha Cherrington**  
Master of Early Childhood Education

*"The support I received from NZTC was invaluable. The team were caring, supportive and understanding and provided continued assistance through a journey that was life-changing."*



I have always held an affinity towards education, especially for our Māori tamariki. I began my journey as a youth worker and moved down the ages as my career moved up. As my tamariki entered te kōhanga reo, I saw how continued development and learning in these early years affected their growth towards further education in a wonderful way.

The challenge of completing the master's degree has enabled me to feel confident and competent in my role as an Education Adviser for the Ministry of Education. I feel comfortable to challenge the status quo with research and relevant literature, while being able to give advice and assistance to those who need it from an educational context.

# A CAREER IN EARLY CHILDHOOD TEACHING

If your goal is to become a qualified early childhood teacher in New Zealand, you will need to complete a teaching qualification.

## STUDENT PROFILE

**Charlotte Taylor**  
Graduate Diploma in Teaching  
(Early Childhood Education)

*"I first completed a Bachelor of Communications and have always had a passion for inspiring and teaching children. The Graduate Diploma in Teaching (ECE) was a fantastic way to combine both of my passions into one."*



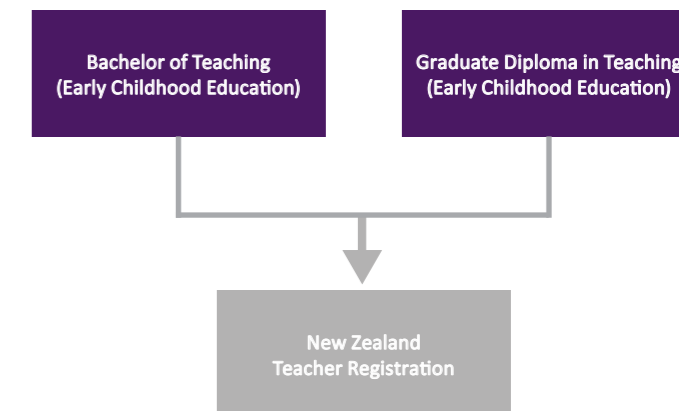
I see the value and importance of investing in the next generation and was inspired by comments I heard through others to study at NZTC.

Online learning made studying while working full-time so much easier. NZTC offers a well laid out structure for each assessment and enables you to engage with a supportive online community at any time. I can't help but mention the supportive lecturers, who are always willing to help and are quick to respond to online questions.

Teachers hold a large responsibility in the world of education and we have the opportunity to influence the learning of young minds in a positive way. NZTC provides a supportive training ground, shapes and challenges your thinking and helps you become an effective teacher. You are well supported throughout the program.

Requirements for teaching qualifications are set by the Teaching Council of Aotearoa New Zealand (Teaching Council) - the New Zealand teacher licensing body. Teaching qualifications require you to complete Field Practice as well as theoretical learning throughout your stages of study.

Our teaching qualifications feature a strong practical component so you can put your new knowledge and learning into practice, giving you valuable hands-on experience in a range of early childhood settings.



Students can directly enter the Bachelor of Teaching (ECE) or they can pathway into it after completing our Level 5 or Level 6 New Zealand Diploma in Early Childhood Education and Care.

The Graduate Diploma in Teaching (ECE) is for students who have completed a degree in any field and would like to move into the early childhood education sector and become a registered teacher.

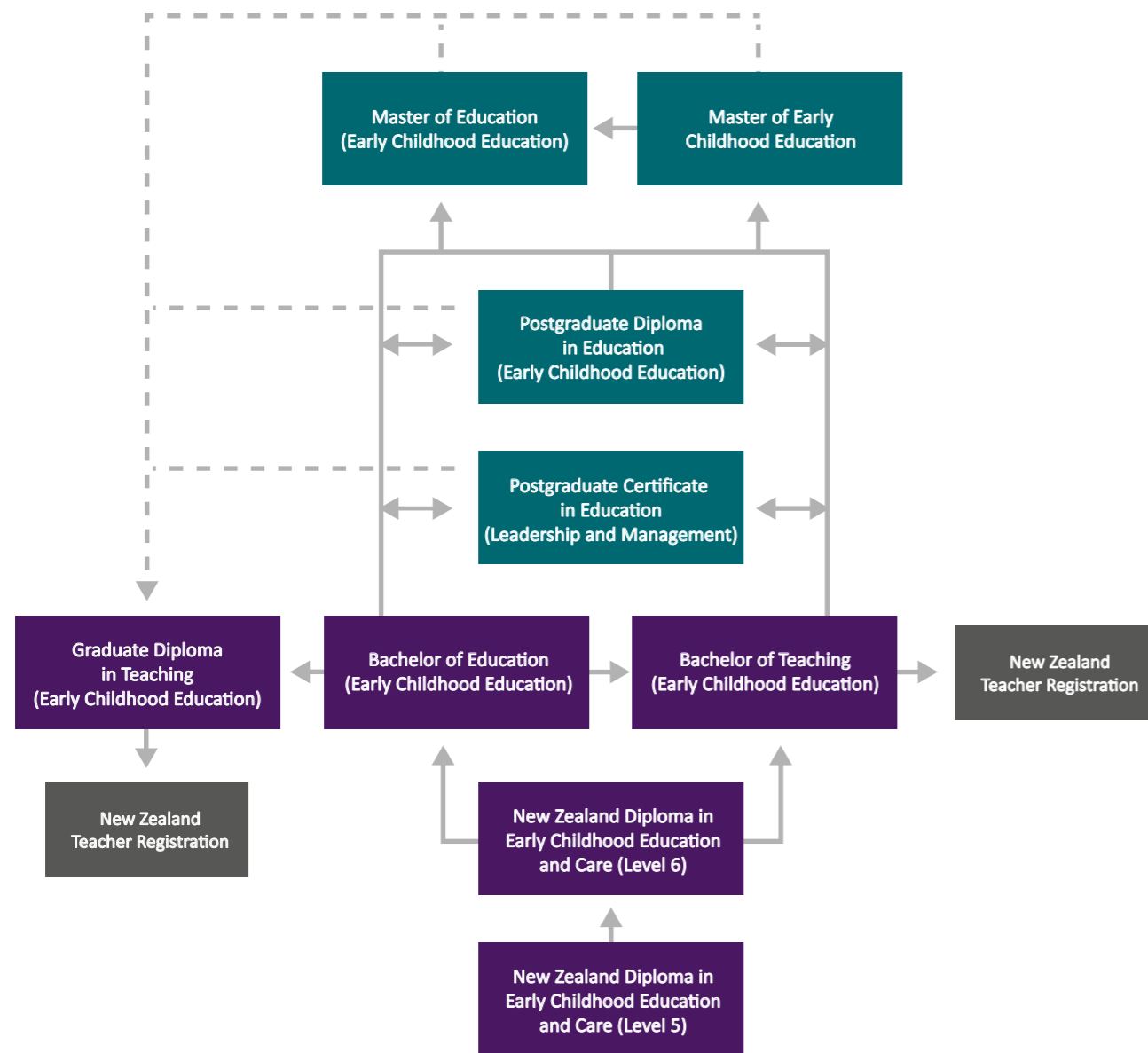


# OUR QUALIFICATION STUDY PATHWAYS

Use the diagram below to select the qualification that is right for you. Graduates of the Bachelor of Teaching (ECE) and Graduate Diploma in Teaching (ECE) are eligible to apply for New Zealand teacher registration.



## FREQUENTLY ASKED QUESTIONS



■ Postgraduate qualifications  
■ Undergraduate qualifications

**I would like to complete the Bachelor of Teaching (ECE), but I don't have University Entrance and I'm not yet 20 years old. What are my options?**

You can apply to study the one year New Zealand Diploma in Early Childhood Education and Care (Level 5). This qualification pathways into the Level 6 Diploma or the Bachelor of Teaching (ECE). Upon completion of the Level 5 and/or Level 6 qualification you can apply to have your credits recognised and transferred to the Bachelor of Teaching (ECE).

**What is the difference between the Bachelor of Education (ECE) and the Bachelor of Teaching (ECE)?**

The Bachelor of Teaching (ECE) has practical components and upon completion graduates are eligible to apply for New Zealand teacher registration. The Bachelor of Education (ECE) does not have any practical requirements and does not lead to New Zealand teacher registration.

**I want to become a registered ECE teacher but I'm not able to do the practical components at the moment. What are my study options?**

All of our undergraduate qualifications apart from the Bachelor of Teaching (ECE) and Graduate Diploma in Teaching (ECE) can be studied without practical teaching requirements. Students have the opportunity to complete Field Practice components at a later date if they wish to pursue New Zealand teacher registration.

**I already have a Bachelor's degree but I want to become a registered ECE teacher. Should I choose the Graduate Diploma in Teaching (ECE) or the Postgraduate Diploma in Education (ECE)?**

If you hold a Level 7 Bachelor's degree and want to become a registered teacher, you must complete the Graduate Diploma in Teaching (ECE) as graduates are eligible to apply for New Zealand teacher registration upon completion. The Postgraduate Diploma in Education (ECE) has no practical teaching requirements and therefore doesn't result in eligibility to become a registered ECE teacher.

**What is the difference between the Master of Education (ECE) and the Master of Early Childhood Education?**

The Master of Education (ECE) is a two year research-based Master's whereas the Master of Early Childhood Education is an 18 month qualification completed through coursework.



# POSTGRADUATE QUALIFICATIONS



Master of Education (Early Childhood Education)

Master of Early Childhood Education

Postgraduate Diploma in Education (Early Childhood Education)

Postgraduate Certificate in Education (Leadership and Management)





# MASTER OF EDUCATION (EARLY CHILDHOOD EDUCATION)

## Program overview

Topics examined during this program include:

- ▶ Authentic leadership in early childhood education
- ▶ Communities of learning and engagement
- ▶ Children and families in early childhood education
- ▶ Infants', toddlers' and young children's learning through the arts in a multicultural society

## Highlights

- ▶ Equips you with higher level research, curriculum and leadership skills
- ▶ If you are a manager or senior level staff, you can enhance your leadership and mentoring of the teachers in your preschool
- ▶ Beneficial if you are seeking a career as a researcher, scholar, lecturer or academic in the early childhood field



## AT A GLANCE

**Method of learning**  
Full-time/Part-time

**Duration**  
2 years (Full-time)

**Mode of learning**  
Online  
Blended Learning

**Start dates**  
February, April, July & October  
February, April, July & October

**Level**  
9

**Credits**  
240

Designed to advance quality teaching, learning, research and scholarship skills in the early childhood sector, this research-based Master's is ideal for graduates who have a degree and want to take their educational and professional skills to a higher level.

*“ I've only ever had good feelings about NZTC. Whenever anybody that I mentor comes to me and wants to be an early childhood teacher, I wave the NZTC flag because I've had such a good learning journey. ”*

**Joanne Beaumont-Bates**  
Master of Education  
(Early Childhood Education)



Visit: [www.nztertiarycollege.ac.nz](http://www.nztertiarycollege.ac.nz)

Our website contains more information about this qualification including the entry criteria, the courses you will be studying, and how to apply.



# MASTER OF EARLY CHILDHOOD EDUCATION

## Program overview

Topics examined during this program include:

- ▶ Leadership and management in early childhood education
- ▶ Adult teaching philosophies and techniques
- ▶ Children and families in early childhood education
- ▶ Infants', toddlers' and young children's learning through arts in a multicultural society

## Highlights

- ▶ Encourages critical reflection on practice as it relates to early childhood education
- ▶ Develops your knowledge and skills through advanced level coursework
- ▶ Beneficial if you are looking to advance your career as an early childhood professional



## AT A GLANCE

**Method of learning**  
Full-time/Part-time

**Duration**  
1.5 years (Full-time)

**Mode of learning**  
Online  
Blended Learning

**Start dates**  
February, April, July & October  
February, April, July & October

**Level**  
9

**Credits**  
180

This Master's degree aims to advance scholarship in curriculum, leadership, advocacy and ethics at a postgraduate level through coursework. This Master's is advantageous for those who wish to develop expertise in a specific area of educational practice.

“ Studying with NZTC has been beyond my expectations. At first I was nervous about pursuing a way of study that I wasn't used to, but everyone at the college has been very supportive – from Pastoral Support, to IT Help, to my lecturers. ”

**Mani Singh**  
Master of Early Childhood Education



Visit: [www.nztertiarycollege.ac.nz](http://www.nztertiarycollege.ac.nz)

Our website contains more information about this qualification including the entry criteria, the courses you will be studying, and how to apply.



# POSTGRADUATE DIPLOMA IN EDUCATION (EARLY CHILDHOOD EDUCATION)

## Program overview

Topics examined during this program include:

- ▶ Authentic leadership and approaches to leadership
- ▶ Research methods in early childhood education
- ▶ Communities of learning and engagement
- ▶ Diverse perspectives on arts in early childhood education

## Highlights

- ▶ Builds on your undergraduate degree to expand your knowledge in early childhood education
- ▶ Beneficial if you are seeking a career as a scholar, lecturer or academic in the early childhood field
- ▶ Pathway to our Master's qualifications



## AT A GLANCE

**Method of learning**  
Full-time/Part-time

**Mode of learning**  
Online  
Blended Learning

**Level**  
8

**Duration**  
1 year (Full-time)

**Start dates**  
February, April, July & October  
February, April, July & October

**Credits**  
120

Degree graduates with an interest in the early childhood sector have an opportunity to enhance their knowledge in research and leadership with this postgraduate diploma that also serves as a pathway to our Master's qualifications.

*“ Every day I use the knowledge I gained during my studies... the academic side helps me significantly in my current studies, and they provide a philosophical backup for my teaching practice. ”*

**Long Li**  
Postgraduate Diploma in Education  
(Early Childhood Education)



Visit: [www.nztertiarycollege.ac.nz](http://www.nztertiarycollege.ac.nz)

Our website contains more information about this qualification including the entry criteria, the courses you will be studying, and how to apply.



# POSTGRADUATE CERTIFICATE IN EDUCATION (LEADERSHIP AND MANAGEMENT)

## Program overview

Topics examined during this program include:

- ▶ Authentic leadership in early childhood education
- ▶ The ethical basis of leadership
- ▶ Managing early childhood settings
- ▶ The teacher leader and manager in early childhood education

## Highlights

- ▶ You will gain higher level specific skills in leadership, management and mentoring
- ▶ Encourages you to critically reflect on leadership and management as they relate to early childhood education
- ▶ Complete an NZQA approved postgraduate qualification in just six months



## AT A GLANCE

**Method of learning**  
Full-time/Part-time

**Mode of learning**  
Online

**Level**  
8

**Duration**  
0.5 years (Full-time)

**Start dates**  
February, April, July & October

**Credits**  
60

Early childhood professionals' scholarship in the areas of leadership and management are enhanced through the study of this postgraduate certificate which focuses on expert knowledge through in-depth exploration of associated issues and trends.

*“ I became more self-aware and understood my own leadership style better, and I am now able to recognise other styles. This clarification has helped me build better relationships with my team members. ”*

**Zahra Herrmann**  
Postgraduate Certificate in Education  
(Leadership and Management)



Visit: [www.nztertiarycollege.ac.nz](http://www.nztertiarycollege.ac.nz)

Our website contains more information about this qualification including the entry criteria, the courses you will be studying, and how to apply.



# UNDERGRADUATE QUALIFICATIONS



Graduate Diploma in Teaching (Early Childhood Education)

Bachelor of Teaching (Early Childhood Education)

Bachelor of Teaching (Early Childhood Education) Upgrade

Bachelor of Education (Early Childhood Education)

New Zealand Diploma in Early Childhood Education and Care (Level 6)

New Zealand Diploma in Early Childhood Education and Care (Level 5)





# GRADUATE DIPLOMA IN TEACHING (EARLY CHILDHOOD EDUCATION)



### Program overview

Topics examined during this program include:

- ▶ Early childhood teachers as leaders influencing quality curriculum
- ▶ Supporting children with diverse needs
- ▶ Supporting cultural diversity through the inclusive pedagogy
- ▶ Modern approaches to child development

### Highlights

- ▶ Use your degree to fast-track to eligibility for New Zealand teacher registration upon completion of this program
- ▶ Benefit from hands-on learning with practical experience in early childhood settings
- ▶ Enjoy the flexibility of learning while you work

## AT A GLANCE

**Method of learning**  
Full-time

**Duration**  
1.33 years

**Mode of learning**  
Blended Learning

**Start dates**  
Choose your start date

**Level**  
7

**Credits**  
160

*Graduates are eligible to apply for NZ teacher registration*

Degree graduates from any discipline are enabled to gain specialist knowledge in the area of early childhood education with this qualification. Featuring a strong practical component, students benefit from hands-on learning and working alongside study commitments. Upon completion, graduates are eligible to apply for New Zealand teacher registration.

### Field Practice

This qualification features a strong practical component that is studied through the required Field Practice course, so that you can put your learning into practice. During Field Practice placements, you are exposed to a range of early childhood settings, age groups, teaching approaches and philosophies. Some of your Field Practice can be carried out in your Home Centre (the centre you may already be employed at).



Visit: [www.nztertiarycollege.ac.nz](http://www.nztertiarycollege.ac.nz)

Our website contains more information about this qualification including the entry criteria, the courses you will be studying, and how to apply.



# BACHELOR OF TEACHING (EARLY CHILDHOOD EDUCATION)



### Program overview

Topics examined during this program include:

- ▶ Modern approaches to child development
- ▶ Early childhood assessment, planning and teaching grounded in play-based curriculum
- ▶ Research, professional practice and leadership
- ▶ Teaching in culturally diverse contexts

### Highlights

- ▶ Developed specifically to meet the demands of the early childhood sector
- ▶ Equips you with all the tools needed to become an effective early childhood teacher
- ▶ You become a confident and resourceful practitioner able to work in a diverse range of early childhood contexts

## AT A GLANCE

**Method of learning**  
Full-time

**Duration**  
3 years

**Mode of learning**  
Blended Learning

**Start dates**  
Choose your start date

**Level**  
7

**Credits**  
360

*Graduates are eligible to apply for NZ teacher registration*

This qualification prepares students for a rewarding career in the field of early childhood teaching. NZTC students gain the skills and knowledge needed to practice with confidence in a diverse socio-cultural context and are eligible to apply for New Zealand teacher registration with the Teaching Council of Aotearoa New Zealand.

### Field Practice

This qualification features a strong practical component that is studied through the required Field Practice course, so that you can put your learning into practice. During Field Practice placements, you are exposed to a range of early childhood settings, age groups, teaching approaches and philosophies. Some of your Field Practice can be carried out in your Home Centre (the centre you may already be employed at).



Visit: [www.nztertiarycollege.ac.nz](http://www.nztertiarycollege.ac.nz)

Our website contains more information about this qualification including the entry criteria, the courses you will be studying, and how to apply.



# BACHELOR OF TEACHING (EARLY CHILDHOOD EDUCATION) UPGRADE

## Program overview

Topics examined during this program include:

- ▶ Inclusive practice and leadership in early childhood education
- ▶ Curriculum approaches, influences and trends
- ▶ Intercultural pedagogy and supporting diversity in early childhood contexts
- ▶ Teaching as inquiry

## Highlights

- ▶ Builds on your existing qualification to expand your knowledge and research capabilities to a degree level
- ▶ Encourages critical reflection on the rapidly changing world of early childhood education
- ▶ No lifestyle changes – this qualification has no field practice requirements, which means there is no disruption to your work and personal commitments



## AT A GLANCE

**Method of learning**  
Full-time

**Mode of learning**  
Online

**Level**  
7

**Duration**  
NZTC Upgrade: 0.5 years  
Upgrade: 1 year

**Start dates**  
Choose your start date

**Credits**  
NZTC Upgrade: 60  
Upgrade: 120

This program is for students who hold a Diploma of Teaching (ECE) or equivalent, but would like to gain a degree qualification. Studied solely online, students will build on their existing knowledge and develop skills to a degree level, focusing on leadership, research and quality curriculum in early childhood education.

“ I believe that the successes I experienced during my studies at NZTC set the ‘can do’ attitude that I still have today. I have achieved my dream and in fact have gone further than I had ever planned to go. ”

**Lynette Radue**  
Bachelor of Teaching  
(Early Childhood Education) Upgrade



Visit: [www.nztertiarycollege.ac.nz](http://www.nztertiarycollege.ac.nz)

Our website contains more information about this qualification including the entry criteria, the courses you will be studying, and how to apply.



# BACHELOR OF EDUCATION (EARLY CHILDHOOD EDUCATION)

## Program overview

Topics examined during this program include:

- ▶ Play as a framework for learning
- ▶ Professional practice and leadership
- ▶ Academic writing and research in early childhood education
- ▶ Culturally diverse early childhood education

## Highlights

- ▶ Provides a comprehensive, theoretical knowledge of early childhood education
- ▶ Gives you a qualification relevant to work in areas such as education, teaching, research, health, policy, management, leadership, social work and curriculum development



## AT A GLANCE

**Method of learning**  
Full-time

**Duration**  
3 years

**Mode of learning**  
Online  
Blended Learning

**Start dates**  
Choose your start date  
Choose your start date

**Level**  
7

**Credits**  
360

Providing essential knowledge and skills for a successful career in a number of early childhood related roles, this degree focuses on the major aspects of early childhood education, exploring current issues and trends without the requirement of practice.

*“ My study has given me the opportunity to learn theoretical ECE perspectives in depth. ”*

**Olga Vishnyakova**  
Bachelor of Education  
(Early Childhood Education)



Visit: [www.nztertiarycollege.ac.nz](http://www.nztertiarycollege.ac.nz)

Our website contains more information about this qualification including the entry criteria, the courses you will be studying, and how to apply.



# NEW ZEALAND DIPLOMA IN EARLY CHILDHOOD EDUCATION AND CARE (LEVEL 6)

## Program overview

Topics examined during this program include:

- ▶ Supporting curriculum areas in early childhood education
- ▶ Working with infants and toddlers
- ▶ Culturally diverse early childhood education
- ▶ Leadership in early childhood context

## Highlights

- ▶ Develops an in-depth theoretical and subject-related knowledge in early childhood education
- ▶ Enhances your leadership capabilities
- ▶ Provides pathway options for further education and teaching qualifications



## AT A GLANCE

**Method of learning**  
Full-time

**Duration**  
1 year

**Mode of learning**  
Online  
Blended Learning

**Start dates**  
Choose your start date  
Choose your start date

**Level**  
6

**Credits**  
120

This program equips students with an in-depth pedagogical knowledge of the major early childhood curriculum areas: language, literacy, the creative arts, mathematics, science and technology; family and community; and foundations for leadership in an early childhood context.

## Field Practice

There is a Field Practice course as an elective within this qualification. Field Practice enables you to put your learning into practice, exposing you to a range of early childhood settings, age groups, teaching approaches and philosophies. Some of your Field Practice can be carried out in your Home Centre (the centre you may already be employed at). Practical teaching requirements must be completed to gain NZ teacher registration eligibility.



Visit: [www.nztertiarycollege.ac.nz](http://www.nztertiarycollege.ac.nz)

Our website contains more information about this qualification including the entry criteria, the courses you will be studying, and how to apply.



# NEW ZEALAND DIPLOMA IN EARLY CHILDHOOD EDUCATION AND CARE (LEVEL 5)

## Program overview

Topics examined during this program include:

- ▶ Becoming a professional early childhood teacher
- ▶ Play as a framework for learning
- ▶ Child development and social competence in early years
- ▶ Culturally responsive early childhood education

## Highlights

- ▶ Provides a strong foundation of knowledge in early childhood education
- ▶ Equips you with strategies on how to put theory into practice
- ▶ Provides pathway options into further education and teaching qualifications



## AT A GLANCE

**Method of learning**  
Full-time

**Duration**  
1 year

**Mode of learning**  
Online  
Blended Learning  
College Based

**Start dates**  
Choose your start date  
Choose your start date  
February & July

**Level**  
5

**Credits**  
120

Laying a strong foundation of theoretical and practical knowledge in the field of early childhood education, this program equips students to become resourceful and reflective professionals, competent in the key areas of learning. These include professional studies, development and learning, and early years' pedagogy.

## Field Practice

There is a Field Practice course as an elective within this qualification. Field Practice enables you to put your learning into practice, exposing you to a range of early childhood settings, age groups, teaching approaches and philosophies. Your Field Practice can be carried out in your Home Centre (the centre you may already be employed at). Practical teaching requirements must be completed to gain NZ teacher registration eligibility.



Visit: [www.nztertiarycollege.ac.nz](http://www.nztertiarycollege.ac.nz)

Our website contains more information about this qualification including the entry criteria, the courses you will be studying, and how to apply.





# FREQUENTLY ASKED QUESTIONS

## Who studies at NZTC?

The majority of our students are New Zealanders; however, we welcome students from all around the world with various backgrounds and cultures. Some students begin their study with us straight out of school while others have previously worked in the early childhood sector or in a completely different industry. Whatever their background, our students are passionate about early childhood education and making a difference in the lives of families and young children.

## I have studied previously. Is there a possibility of receiving credit towards a New Zealand Tertiary College program?

Yes. Credit towards your chosen program at NZTC for courses which you have already studied at other tertiary providers, is assessed by NZTC's Credit Recognition and Transfer (CRT) assessment.

Credit is assessed on a case-by-case basis. If you wish to apply for credit you will be required to pay a \$95.00 application fee. This fee covers the cost involved in the assessment process of CRT. Students will be required to pay the fee prior to their CRT assessment and interview with NZTC.

## For New Zealand qualifications:

If you have a completed (or partially completed) qualification in early childhood education from a New Zealand education provider, you may be eligible to receive credit. CRT assessment is completed by our Curriculum Team. Whether you receive credit for your previously completed qualification depends on whether the learning outcomes of each course correspond with the learning outcomes in NZTC courses, and whether the level of your previous study equates to your intended NZTC program. To be assessed for credit, you must supply a verified copy of your transcripts and learning outcomes for each course or qualification (the education provider will be able to give these to you) you have completed.

## For overseas qualifications:

You may be eligible for credit if you have completed an early childhood qualification at an overseas tertiary institution. Before NZTC begins the CRT process, you need to get your qualification assessed by NZQA. Please contact NZQA for more information about this process - [www.nzqa.govt.nz](http://www.nzqa.govt.nz)

## What is available in the way of financial support?

If you are a full-time New Zealand citizen or permanent resident studying in New Zealand, you may be eligible for a student loan or allowance through StudyLink to help with your compulsory fees, course related costs and living costs. The student allowance is a weekly payment for full-time students to help with day-to-day living costs. For more information see the StudyLink website - [www.studylink.govt.nz](http://www.studylink.govt.nz)

## Fees Free

If you are a New Zealand citizen or Permanent Resident and new to tertiary study then you might be eligible for Fees Free. To see if you are eligible, visit their website at [www.feesfree.govt.nz](http://www.feesfree.govt.nz)

## Can I work overseas with my NZTC qualification?

Yes, NZTC's qualifications are internationally recognised and NZQA approved. They are also listed on the New Zealand Qualifications Framework, the definitive source for accurate and current information on quality assured qualifications in New Zealand.

Specific country recognitions include:

### Australia

Our Bachelor of Teaching (Early Childhood Education) and Graduate Diploma in Teaching (Early Childhood Education) qualifications are approved by the Australian Children's Education and Care Quality Authority (ACECQA) – the body which oversees the national quality framework for the Australian early childhood sector. This means that NZTC graduates wishing to apply for Early Childhood Teacher (ECT) status in Australia can do so without having to apply for an assessment of their qualifications.

### China

NZTC is recognised by the Chinese Ministry of Education as a trusted education provider and is listed on the Jiaoyu Shewai Jianguan Xinxiwang website for high quality education institutions outside China. Our qualifications are approved for Chinese students to attain public and private work in China by the Chinese Service Centre for Scholarly Exchange.

### Sri Lanka

The University Grants Commission - Sri Lanka recognises New Zealand Tertiary College as an international higher educational institute of standing. The University Grants Commission – Sri Lanka is responsible for the quality of higher education in Sri Lanka.

### Malaysia

The college's Bachelor of Education (Early Childhood Education) qualification is the first New Zealand degree to be accredited by the Malaysia Ministry of Education and the Malaysian Qualifications Agency – the entity responsible for quality assurance in higher education in Malaysia.

### Germany

NZTC is listed on Anabin – a German higher education database and website that shares international tertiary institutions offering recognised BA/MA courses that German universities can partner with. This means our degree students have the ability to study and work in Germany, or further their study at a German university.

## What scholarship opportunities are available?

NZTC students may be eligible to apply for one of the following scholarship opportunities:

### NZTC Scholarships:

We have a number of scholarships available for domestic students. Please visit our website to see our scholarship opportunities or contact our Enrolments Team for further information - [enrolments@nztertiarycollege.ac.nz](mailto:enrolments@nztertiarycollege.ac.nz)

### TeachNZ Teacher Recruitment Scholarships:

TeachNZ Teacher Recruitment Scholarships (Early Childhood Education) have been introduced for qualifications leading to New Zealand teacher registration to increase the number of teachers in the early childhood sector. An early childhood education scholarship pays course fees and, for full-time students only, the scholarship pays an allowance of up to \$10,000 over the period of study. For more information see the TeachNZ website - [www.teachnz.govt.nz](http://www.teachnz.govt.nz)

### Ministry of Education:

ECE Service Teacher Education Grants (ECESTEG) are intended to support teacher-led services to assist staff members to gain their first Teaching Council of Aotearoa New Zealand (Teaching Council) approved early childhood teacher qualification that leads to teacher registration. Application forms are sent to all teacher-led services and will also be available on the Ministry of Education website - [www.education.govt.nz](http://www.education.govt.nz)

### International Scholarships:

New Zealand Tertiary College offers a limited set of scholarships for international students. For more information please contact [international@nztertiarycollege.ac.nz](mailto:international@nztertiarycollege.ac.nz)

### How are the courses assessed?

All courses are internally assessed and include theory based assessments and practical components. There are no exams.

### Are my tuition fees safe?

In the unlikely event that NZTC is unable to deliver the qualification you have enrolled in, NZTC has protected your fees with Public Trust. Fees deposited and protected by the Public Trust are held in the Common Fund which has an unsecured guarantee from the New Zealand Government. The student fee protection for NZTC is fully compliant with NZQA rules. Should access to your fees be necessary, you may contact Public Trust on 0800 494 733 or email [feeprotect@publictrust.co.nz](mailto:feeprotect@publictrust.co.nz)

This arrangement has been accepted by NZQA as meeting the requirements of the Education Act 1989 and the Student Fee Protection Rules 2013.

Should you have any questions not covered in this section, please email our Enrolments Team or visit our website for more information.

[enrolments@nztertiarycollege.ac.nz](mailto:enrolments@nztertiarycollege.ac.nz)  
[international@nztertiarycollege.ac.nz](mailto:international@nztertiarycollege.ac.nz)

[www.nztertiarycollege.ac.nz](http://www.nztertiarycollege.ac.nz)

You can also follow us on our social media platforms.



Wechat ID: [kiaora\\_nztc](https://www.wechat.com/p/kiaora_nztc)





By choosing to study with NZTC, you are choosing to begin or progress your career with a college who has been specialising in early childhood education for 37 years.

# HOW TO BECOME AN NZTC STUDENT

## STEP 1: CHOOSE YOUR PROGRAM OF STUDY

New Zealand Tertiary College programs are delivered with various modes of learning. Please note that we have specific entry criteria for each program.

## STEP 2: APPLY

The fastest and most convenient way to apply to study with NZTC is by submitting your application online, via *NZTC Apply*.

The application process varies depending on the mode of learning selected and your NZ Residency Status. Some programs have additional admission requirements, for example, you may need to complete additional forms, or be interviewed.

Students living in New Zealand are generally interviewed face-to-face. For applicants living overseas, your interview will be carried out via video conference.

## STEP 3: ACCEPTANCE

If your application is successful you will receive an offer letter and invoice. This may be on the condition that you meet specific requirements.

To accept the offer of placement, you will need to return your signed offer letter to New Zealand Tertiary College and pay the tuition fees.

## STEP 4: ENROLMENT

Once you have accepted your place and paid your fees, you will be issued with a Student Acknowledgement Form which you will have to sign and send back.

Once we receive your signed Student Acknowledgement Form, you will be enrolled as a current student and issued with your student details and course start date in order to begin your early childhood studies.

## INTERNATIONAL STUDENTS

### STEP 1: CHOOSE YOUR PROGRAM OF STUDY

New Zealand Tertiary College programs are delivered with various modes of learning. Please note that we have specific entry criteria for each program.

### STEP 2: APPLY

The fastest and most convenient way to apply to study with NZTC is by submitting your application online, via *NZTC Apply*.

The application process varies depending on the mode of learning selected and your NZ Residency Status. Some programs have additional admission requirements, for example, you may need to complete additional forms, or be interviewed.

Students living in New Zealand are generally interviewed face-to-face. For applicants living overseas, your interview will be carried out via video conference.

### STEP 3: OFFER OF PLACE AND ACCEPTANCE

If your application is successful you will receive an offer letter and invoice. This may be on the condition that you meet specific requirements. To accept the offer of place, you will need to return your signed offer letter to New Zealand Tertiary College.

### STEP 4: STUDENT VISA AND FEE PAYMENT

When you have met the conditions stated in the offer letter, you may be eligible to apply for Approval in Principle from Immigration NZ for your visa. You can make fee payment once AIP has been approved. Upon payment of your full fees, receipt of fees is sent to you to enable you to get your student visa.

### STEP 5: OBTAIN YOUR VISA AND ENROLMENT

Once you have received your student visa and submitted a copy to New Zealand Tertiary College, you will be invited to attend an orientation program and issued with a Student Acknowledgement Form.

After we receive your signed Student Acknowledgement Form, you will be enrolled as a current student to begin your studies. You must ensure that your visa remains valid throughout the program of study.

### STEP 6: ENROLMENT

Once you have received your student visa and submitted a copy to New Zealand Tertiary College, you will be issued with a Student Acknowledgement Form which you will have to sign and send back.

Once we receive your signed Student Acknowledgement Form, you will be enrolled as a current student to begin your early childhood studies.

# FIND OUT MORE

## VISIT OUR WEBSITE

For the latest information on our qualifications and to keep up-to-date with what is happening at NZTC visit our website.

 [www.nztertiarycollege.ac.nz](http://www.nztertiarycollege.ac.nz)

## CALL OR EMAIL US

If you would like to speak with one of our Enrolment Advisors call Auckland +64 9 520 4000 or Christchurch +64 3 366 8000. Alternatively domestic students can email [enrolments@nztertiarycollege.ac.nz](mailto:enrolments@nztertiarycollege.ac.nz) and international students can email [international@nztertiarycollege.ac.nz](mailto:international@nztertiarycollege.ac.nz) with any questions you may have.

## DROP IN AND SEE US

If you would like to speak with one of our Enrolment Advisors in person to discuss your early childhood education journey, you can drop in and see us at the following locations:

### Auckland Campus

Level 2  
1 Marewa Road  
Greenlane  
Auckland 1051

### Christchurch Campus

Unit 12 & 13  
114 Sawyers Arms Road  
Papanui  
Christchurch 8052

## PLEASE NOTE

Every effort has been made to ensure the accuracy of the information in this prospectus at the time of going to print. However, changes and developments are part of the life of the college and alterations may occur to qualifications, staff and services described in this prospectus.

Please refer to our website ([www.nztertiarycollege.ac.nz](http://www.nztertiarycollege.ac.nz)) for the most up-to-date information.

New Zealand Tertiary College reserve the right, without notice, to withdraw courses, amend fees, vary the content and delivery of programs etc. at any time before or after the applicant's admission. The College is responsible for all admissions decisions.

© New Zealand Tertiary College, 2019. All rights reserved.





**New Zealand  
Tertiary College**

---

TERTIARY COLLEGES GROUP

---

**AUCKLAND**

**(09) 520 4000**

New Zealand Tertiary College  
Level 2  
1 Marewa Road  
Greenlane  
Auckland 1051  
New Zealand

**CHRISTCHURCH**

**(03) 366 8000**

New Zealand Tertiary College  
Unit 12 & 13  
114 Sawyers Arms Road  
Papanui  
Christchurch 8052  
New Zealand

[www.nztertiarycollege.ac.nz](http://www.nztertiarycollege.ac.nz)